

THE CHRONICLE

A Newsletter for the Residents of Canterbury Common
Port Perry, Ontario
www.canterburycommon.ca



REPORT FROM YOUR BOARD

Summer, 2022
Lou Rocha, President

There's nothing common about Canterbury Common. Teresa and I learned this very quickly in the year since we moved into our new home on McCaw Court. Everybody smiles and says "hello". Strangers open doors and offer to help. No one honks their car horns at stop signs! We felt at home the moment we arrived. The culture of this community is the result of a commitment to the common good. You see this in the way people treat their neighbours, their properties and their shared facilities. The equity in our homes is increased by the equity in our community. The Centre, the pool, the activities and many services are provided by scores of volunteers in an efficient and cordial committee structure that has been nurtured by the residents for many years. The Board of Directors is comprised of our neighbours who govern the association in accordance with By-Law #1 and the Policies and Guidelines. The Protective Restrictions provide a set of rules that allow individual choices within a sensible framework that ensures the beauty of our shared neighbourhood. Check out the Video Gallery on our website for a drone video of Canterbury. It's breathtaking and clearly demonstrates the pride of every homeowner.

As I start my term as President of our Association, I would like to thank President Jim Brady, Secretary Marilee Egan and Director Nora Senechal for their service on the Board. Jim navigated this community through the arrival of 99 new homes and the dangers of the pandemic. Marilee has been an excellent Secretary and provided comprehensive minutes that will assist the next Board. Nora was liaison to the Communications committee where she continues to serve as chair in addition to her voluntary role as Office Manager. Our outstanding Chronicle is a tribute to Nora and her committee. Thanks are owed to many other volunteers whom I will acknowledge in my future communications to you.

The new Board will begin its work immediately. There are several critical matters to resolve that involve CCRA, the Township of Scugog and the Canterbury Land Development Committee (Geranium's representative). These items are managed by our Canterbury Transition Committee which was recognized last year for its work over the last six years. The CTC will bring regular updates to the Board of Directors and will continue to communicate directly to the residents. The Board will be consulting with the residents on the proposals from the Land Use Committee for the use of the former golf course lands which have been partially transferred to CCRA from the Township. The previous Board approved funding from the future initiation fees of the Phase 2 homes on Holtby Court but there may be other expenses related to these new common areas.

There is a need to replenish the ranks of volunteers who provide so many services for the benefit of their neighbours. This effort will need to be a year-round campaign to find members for our committees and the Board of Directors. The review of the Ontario Not-for-Profit Corporations Act (ONCA) will continue and the ad hoc committee will draft the required amendments to By-Law #1 during the summer and fall. Details will be published over the next few months. The amendments will be reviewed in town hall meetings prior to the next Annual General Meeting in June 2023.

I look forward to serving as your President. I am very pleased to have a strong Board to help me with that responsibility. Please feel free to contact me by email or drop a note at the office.

BOARD COMMITTEE REPORTS

ADMINISTRATION COMMITTEE

Ron Barrow, Vice-Chair

As we prepared for the grand opening of The Centre, it's good to know that your administration team worked hard to maintain safety and security for all residents. One of the main concerns for the Administration Committee is the safety and security of residents as they use The Centre. Our safety focus is with entry into the building, but also addresses the fire safety systems and of course the kitchen.

There are four entry doors into The Centre and currently access through three of these doors has been updated to an automated or electric card (FOB) entry system. What this means is that instead of using your keys you should use your FOB to "unlock" the door. Just swipe the FOB in front of the reader (beside the door) — an alert tone will sound; the reader light will change from red to green and the door will unlock. Electronic entry gives us continuous records of all persons using the centre. You may have noticed that lately we do not have sign-in books at the front door. This is because when you swipe in with your key FOB you are signing in and the system will record the information.

Each registered person in Canterbury Common has been assigned a key FOB. To clarify, if there are two individuals registered at your residence then there are two individual key FOBs assigned. To help maintain accuracy of use and our record keeping we ask that you use only the key FOB that has been assigned to you. Take a minute now to make sure you know where your entry FOB is located because you will need it to get into the building for any activities or meetings you attend. Again, as we update all the other doors you will definitely need a FOB to enter all areas of the building.

There's a bit of confusion with regards to why will we give you a key Fob and regular keys. Well, that's an easy answer. All the doors have not been updated to use the electronic entry. We are working on those updates now — they include access to the pool area and entry through the north parking lot door. We certainly want you to use the FOB every time you enter The Centre.

If for any reason you cannot find your key Fob, please contact office@canterburycommon.ca or phone the office at 905-985-5258 to let us know right away as we can cancel the old one and get you a new one.

With regards to the building itself, I believe the building is in good readiness for our activities. The fire alarm system has passed its annual inspection and all the extinguishers are ready for use.

Safety is key for all of us, and is a responsibility for each and every one of us. As you go around the building let us know if you see something that is out of place or may cause an undue risk to users. You can contact us at office@canterburycommon.ca or phone 908-985-5258. Leave us a message and we will address the issue immediately.

COMMUNICATIONS COMMITTEE

Nora Senechal, Chair

The Communications Committee would like to welcome Dot Clark to the team. Dot will be leading the distribution team. We look forward to working with her. Also, a big welcome to the new Board Liaison Director for Communications, John Nesbitt who will be a part of a great group of volunteers.

The last year was quite busy for Communications: *The Chronicle*, the *Canterbury Information Bulletin*, providing content for the Electronic Message Board and updating Bulletin Boards in The Centre as well as introducing a new website were jobs we tackled. Our biggest project by far was the website. We had a smooth transition to the new website thanks mainly to Dave Streeter with support from the dedicated website team. Currently we are looking for an Editor for the *Canterbury Information Bulletin*. If you are interested in working on this project, please contact Nora at chronicle@canterburycommon.ca.

FINANCE COMMITTEE

Lee Maher, Chair

Finance Fiscal Update - Spring 2022

The 2021/2022 financial statements were presented to the CCRA Board with the following summary:

- Total income (\$176k) was \$4.4K under plan
- Members assessments were slightly under plan due to late closing of Geranium homes
- Total Operating Expenses were under plan (\$132K vs planned \$169K) with the continuing COVID-related restrictions to CCRA Centre activities.
- Major deviations from 2021/22 plan included significant savings in utility expenses and property maintenance.
- Land Use Development Budget is tabled at \$27K for 2022/23. This expense will be financed through the remaining Geranium homes initiation fees
- The current Capital Budget has an \$11,750 deficit. Capital Fund deficits will be addressed later this fiscal year.
- The Replacement Reserve fund (RRF) has a balance of \$73K, beginning 2022/23. Budget forecast calls for an additional \$26K to be added to the RRF, offset by upgraded parking lot lights (\$10K) and bulletin board replacements (\$4K)

Operating Budget For 2022/23

- Income is projected at \$205K vs \$180K for 2021/22
- CCRA resident assessment for 2022/23 has been approved by the CCRA Board at \$550/household, consisting of \$475 to cover operating
- expenses and \$75 for Replacement Reserve Funds

GOVERNANCE COMMITTEE

Gord Simmons, Chair

SIGNS IN CANTERBURY

Every so often it is necessary to write about some element in the Protective Restrictions so that there is a full understanding of the details. A review once in a while makes it easier for those of us who are new to the community to appreciate the limitations and time frames that are in place. The objective behind the sign regulations both here in Canterbury and in Scugog Township is to ensure that there is an uncluttered appearance to the community.

In Canterbury our Protective Restrictions don't ban signs completely but place a limit on those allowed as well as indicate the length of time they may be displayed.

Section 5 of Schedule A of the Protective Restrictions clearly states that *no signs (other than standard realtors' signs), billboards, notices or advertising matter of any kind shall be placed upon the Lands, except with the prior consent of the association and provided that the same are not in violation of the Municipal sign by-law or any other applicable authority.*

Realtor Signs - Realtor signs may be displayed on your lawn for the length of time that your home is for sale. Once your home has been sold your realtor is allowed two weeks to display the sold sign and then is asked to remove the sign from your lawn.

Business Signs - Suppliers who are working on your property may display their signs, with your permission of course, for the length of time they are actually working on your home. When the job has been completed the sign must then come down.

Continued on page 4

BOARD COMMITTEE REPORTS

Continued from page 3

We need your help here to let them know that they need to remove the sign when the job has been finished.

Political Signs - During the election process political signs may be displayed on your property with your permission and should be removed very quickly after the election. The Township by-law is clear that all signs on Township property must be removed within 48 hours.

Other Signs - from time to time there have been other unauthorized signs installed which advertised a new pizza restaurant, drive slowly and a protest against a medical situation. None of these signs were authorized nor would they be under our Protective Restrictions.

We recently had a situation in Canterbury where one political party placed signs on Canterbury property at The Centre. Upon seeing the signs up on our property another party quickly followed suit and did the same thing. Unfortunately, neither party had asked for permission to display the signs and were told to take them down immediately. Had one of our residents not moved quickly to notify Governance of the situation we could have ended up with a proliferation of signs from the other two parties as well.

We control the placement and display of signs for this very reason. Without this control mechanism in place, we could end up having a jumble and assortment of signs taking away from the very pleasant, orderly appearance of our beautiful, well landscaped community.

HOUSE AND PROPERTY COMMITTEE

Ren Blimke

The House and Property Committee continues to be involved in many different activities inside and outside of the Centre. Below is a list of maintenance issues the committee has been busy working on:

- the uneven brick walkway near the west doors was relevelled to correct a tripping hazard
- concerns regarding the pot lights flickering on the upper level in the new extension.
- comments about strange noises coming from the attic/roof area of the Centre.
- getting quotes for the Parking Lot Lights.
- completed spider spraying and window cleaning at the Centre.

The Gardening Group has been hard at work again “sprucing up” the gardens around the Centre and elsewhere. The results of their efforts are obvious and will only become more pronounced as the season moves along. Grass cutting has been more frequent this year during dandelion season, a significant increase over prior years. Generally speaking, this was well received throughout our Community. As the season moves along though, frequency of cutting will be determined on a “needs” basis. Spraying for weeds around the Centre was initiated on a trial basis. The results to date have been very positive and we may want to continue this practice going forward.

We are happy to have three new members join the Gardening Group and another three new members have joined the H&P committee. Thank you to all concerned. Having said that, we are always on the lookout for more help. So, if you think you can help, don't be shy. Remember, volunteers are an integral part of our Community and certainly help to keep annual fees as low as possible.

MUNICIPAL AFFAIRS

Dorothy Bull, Chair

I recently received two calls from a resident reporting a dead tree and also evergreen shrubs around the utility box just to the south of the Centre which are in very bad shape. The tree is on township property but I'm not sure who is responsible for the shrubs. It could be Hydro or Bell.

I followed up with a call to Meghan Michel, at Scugog Township, and she assured me that she would make sure the dead tree is on the list to be taken down and she would find out who is responsible for the shrubs. The township does not cut down trees in nesting season, so the tree will likely be taken down in the fall.

BOARD COMMITTEE REPORTS

Continued from page 4

I followed up with the township offices checking on signage that was promised last year. I was reassured that the signs are definitely coming but are out to contractors and are nowhere near ready. This includes the 40 km/hr signs and the sign for between 231 and 235 Waterbury Crescent advising that this is Township Property and the guidelines for applying for vehicle access permits.

The LUC asked me to inquire as to how we would get permission to join our proposed walking path with the Waterfront Trail. Meghan Michel has promised to research this and get back to us.

SOCIAL COMMITTEE

Lauren Maher, Chair

We continue to meet as an enthusiastic group of volunteers, eagerly planning future events for when COVID restrictions are relaxed, and we can fully access our beautiful new Centre.

Unfortunately, we were unable to host our popular Coffee Hour events, and the Bingo Night had to be postponed, due to COVID restrictions. The weather cooperated and thanks to Jeanette Rintoul and her team of volunteers, the Annual Canterbury Yard Sale returned to the neighbourhood after a COVID timeout.

As mentioned in earlier editions of *The Chronicle*, the much-anticipated Official Opening of The Centre was held on June 4, and we encourage you to view the picture gallery on the Canterbury Website. Hopefully, you were able to view the video presentation of the drone coverage of our lovely Canterbury community. Special thanks to residents Lou Rocha and Charly Kovacshazy for the preparation of the video and putting it to music. The video will be kept in our archives for future viewing.

CANADA DAY: July 1, 2 - 4 p.m. We will NOT be hosting Canada Day in The Centre this year, but invite you to join us OUTSIDE at the front of the Centre to sing O Canada, and then proceed to the lower level at The Centre for Happy Hour with entertainment by some very talented Canterbury residents. Bring your chairs, drinks and snacks, and let's hope for a beautiful, sunny day. We also encourage each of our residents to decorate their home and property for Canada Day. We put on quite a display of Canterbury Spirit last year!

As mentioned, planning continues for future events as restrictions are lifted. At this time, we encourage you to SAVE THE DATES:

OKTOBERFEST	October 15, 2022
HOLIDAY WINE TASTING	December 2, 2022
NEW YEAR'S EVE	December 31, 2022

Looking forward to when we can all be together again. Have a Happy & Safe Summer.

COMMUNITY COMMITTEE REPORTS

SCRAMBLE GOLF & SOCIAL

Robbie MacDonald, Chair

After a somewhat soggy start and some minimal damage to the course due to the recent storm, the Scramble Golf Season is now in full swing with weekly games at Crestwood Golf Club. The weather in late May and June was kind to the course and the golfers and we had some wonderful golf games. We are delighted to welcome many new members this year that have been taken by the 'bug.' We have had the opportunity to finally meet the other residents of the Canterbury community and we hope many more of the residents arriving in 2022 will join us.

Due to the uncertainty of the full opening of the Centre, we have asked Bruce at Crestwood to cater dinners after our Scramble for three weeks in June. The first one was a very popular success and we are looking forward to our next dinners in the sun. Hayden the 'Crestwood Songstress' has agreed to sing for us. We are still hopeful to start dinners at our 'new' Centre in July. Needless to say, we miss George Clapham's hand at the wheel and we wish him a speedy and full recovery. "Get well soon George!"

LAND USE COMMITTEE

A group of dedicated volunteers chosen by the CCRA Board and the Land Use Committee has had quite the year. David Cooper chaired the committee. They were given a very difficult job but have risen to the challenge. Tasked with interpreting the results of the CCRA board sponsored survey and implementing these results as real-life projects was an enormous responsibility. After many starts and stops, lots of research and some input from the Board, the Land Use Committee has recommended three individual projects for the good of Canterbury.

Please view the pictures on these pages to see our vision of three small pieces to the puzzle of using our new lands.



Project 1: Activities.

Mary-Anne Matthews and her team researched many activities and have recommended five activities for implementation in the 2022/23 fiscal year.

They include Pop Up Badminton, Cornhole, Croquet, Ping Pong/Table Tennis and Horseshoes.

With such a diverse list of games we hope there will be something for all residents to enjoy.



Project 2: Naturalization.

Dorothy Bull, an avid environmentalist chose to look into the naturalization of some of the newly acquired lands.

This was quickly identified as a much bigger project than initially expected.

At this time, Dorothy suggested that we plant wild flowers in the bunkers along the former first fairway, now known as the Lakeside Meadows.



Project 3: Walkway Trails.

Ren Blimke has looked into extending the McCaw walkway to connect to the pathway to the waterfront trail.

This is the first step in adding/improving walkability in Canterbury.

ACTIVITIES

AQUAFIT

Eileen Walter
Nora Senechal

The pool is finally open and Aquafit has started. We have classes Monday through Friday in the pool from 1:00 – 2:00 p.m. Please try to show up a couple minutes early to make sure you have time to use the shower before the activity begins.

Monday, Wednesday & Friday

These classes will be led by Eileen or Nora. Eileen has a list of women she has been working with for years and the class is currently at the pool capacity limit. At this time Eileen is not taking new names for the list so please look at the Tuesday & Thursday classes if you are interested in trying Aquafit. Ladies don't forget your pool noodle.

Tuesday & Thursday

These classes will be led by Nora. This class is open to all Canterbury residents on a first come first served basis. Once the capacity limit of 14 is met any additional swimmers will have to wait for another day. Sounds like a really strict rule but so far this has not been a problem as attendance for this group has been lower than the Monday, Wednesday & Friday group. Nora hopes to incorporate the use of pool weights in the class this year so if you have a set of weights make sure to bring them. Don't forget your pool noodle.

Remember our volunteers are leaders; they are not qualified instructors.

BID EUCHRE & EUCHRE

Murray Lennox

If it's Monday night at 7:00 p.m. it must be Bid Euchre at The Centre. If you're interested in having some fun, playing some cards and catching up on local news, bring a toonie and show up. It's not a league; you don't have to come every week. Just drop in and play some cards.

EUCHRE

Bill Anderson

If it's Wednesday night at 7:00 p.m. it must be Euchre at The Centre. Come on out and play some cards and catch up on local news. Bring a toonie and show up. It's not a league; you don't have to come every week. Just drop in and play some Euchre.

CRIB CLUB

Audrey Thompson

Due to possible Scramble dinners on Thursday evenings, we will play cribbage at 7 p.m. on Monday evenings until further notice. All are welcome.

BOOK CLUB

Robin Stamper

Following a summer break, the CCRA Book Club will resume on October 27th, 2022 at 2:00 p.m. at the Centre and will continue on the last Thursday of each month.



New members are welcome - just come on over! For further information, contact Marilee Egan (mppete@gmail.com) or Robin Stamper (robinastamper@gmail.com).

Books chosen for 2022 – 2023 are:

- Oct. 27 - The Maid - Nita Prose
- Nov. 24 - The Diamond Eye - Kate Quinn
- Jan. 26 - The Paris Bookseller - Kerri Maher
- Feb. 23 - Before We Were Yours - Lisa Wingate
- Mar. 30 - The Marlow Murder Club - Robert Thorogood
- Apr. 27 - The Midnight Library - Matt Haig
- May 25 - That Summer Place - Jennifer Weiner
- Jun. 29 - Becoming Mrs. Lewis - Patti Callahan Hiney

CANTERBURY ARTISANS

Birgit Pullen

Our group of ten participants has been busy during the winter and spring, trying out new techniques ranging from "swipes" to creating a townscape collage with tissue paper, and painting snow drops with texture such as sand. Hopefully you were able to view some of our work at the Ribbon Cutting Ceremony and Open House on June 4th. We will take a break for July and August and will return in September with new ideas!

For more information please don't hesitate to contact Birgit Pullen at: birgit.pullen@gmail.com
Have a safe and wonderful summer!

CHAIR YOGA

Sharon Stevens-Hazelton

New dates for the summer sessions for Chair Yoga and Gentle Hatha Yoga will be announced shortly. Chair Yoga will continue to be held Mondays at 11:00 a.m. on the main floor of the Centre. Summer weekends can be busy with family and friends, so Gentle Hatha Yoga will now be taking place on Tuesdays. These classes will be held at 4:00 p.m. in the Lower Level of the Centre. This will also allow easy access for any outdoor classes. A Notice will be distributed shortly setting out the dates.

Wishing you all an enjoyable summer!

ACTIVITIES

DUPLICATE BRIDGE

Doug Thiemann

No submission for this issue



KNITWITS

Jane Sibul and Robin Stamper

This is the time we relax: no deadlines and sometimes too hot to knit. So, grab a cool drink, mosey over to the Centre between 1:00 and 3:00 p.m. on Fridays, and see what's up. It is cool inside and sometimes we're on the balcony watching the swimmers as we knit, chat and visit. All are welcome!



LIBRARY

Lorna Zamulinski

Thank you to all who have donated new books to our library for our readers to enjoy. These books can be found in both the hardcover and paperback sections of our library under, "new books". Donations of gently used books are always welcome.



LINE DANCING

Alice Lynch
Cathy Spohn

If you take one step forward and two steps backwards, don't be discouraged. You just learned how to line dance!

This class is designed for those who want to learn some basic, simple line dances while exercising both brain and body. The class is held Tuesdays from 10:30 to 11:30 a.m. in The Centre. You need no "Dancing with the Stars" aspirations: just two feet and the desire to have fun....and a mask and proof of vaccination, of course. If you'd like to know more, come out Tuesday morning or phone Alice Lynch at 905-982-0766. And, if you happen to already know a simple line dance (or 2 or 3 ...) we hope that you might also share that knowledge with the group.

Remember: You don't stop dancing because you grow old; you grow old because you stop dancing! See you Tuesday.

MAH JONGG

Carol Sambrook

We are back at 1:00 p.m. on Tuesday and Thursday afternoon. Come and learn this interesting game. No money is involved.



MIXED BRIDGE AND LADIES' BRIDGE

Carol Hough

Tuesday Evening Mixed Bridge is on hold until the fall. In October we will play Monday afternoons. Have a wonderful summer and we will see you in October.



Wednesday Afternoon Ladies' Bridge will be played every Wednesday during the summer. Due to COVID, we are still asked to follow the COVID rules: sanitize your hands and wear a mask at all times in the Centre. Please bring a loonie for prizes and your bottle of water for refreshment. Looking forward to a good turnout to keep us playing.

POKER BOYS

Mike Smith

Come out and join us every Monday night from 7:00 p.m. to 9:30 p.m.



- 7:00 p.m. to 8:45 p.m. Dealer's Choice - ante 25 cents, max. bet 20 cents, 3 bump max.
- 8:45 p.m. to 9:30 p.m. Texas Hold 'em - \$5.00 buy in

For further clarification or information call Mike at 647-960-6398 or send an email to mwsmc@rogers.com.

POOL AND DART BOYS

Mike Pullen

We meet on Tuesday nights at 7:00 p.m. in the lower level of the Centre for a friendly game of pool and darts. We watch a game (if one is on) on the TV downstairs as well. All are welcome. Bring your own beverage and enjoy some male company!

For more information contact: Mike Pullen at mmpullen@gmail.com

THE POOL

Ren Blimke

Pool opening day has come and gone. Along the way some minor glitches were experienced but all were handled without incident. Over the past couple of weeks, many residents have enjoyed the crystal-clear water and taken advantage of the tables, chairs and umbrellas located around the pool deck.

Pool noodles have been purchased for community use. They are located in the plastic bin next to the shower. If possible please allow noodles to dry before returning them to the bin.

ACTIVITIES

POWER WALKING

Pam Birgeneau
Barbara Pedder



We exercise in the main hall on the upper level of the Centre Monday to Friday from 8:10 a.m. to 9:00 a.m. Using a variety of Leslie Sansone DVDs, we power walk while engaging muscles of the upper and lower body. Each DVD covers a distance of three or four miles with some routines using an exercise band or weights during the walk. This walking program improves range of motion, muscle conditioning, and the ability to stretch to keep our bodies fit (and young?). No cost and no commitment. Everyone Welcome

THEATRE / RAMA TRIPS

Ken and Frances Hurst

We went to Niagara Falls in April. Since it rained on the Sunday we were there, we decided to get some last-minute tickets to head out to Shaw Festival Theatre at Niagara-On-The-Lake to see "Damn Yankees!" It was an excellent, delightful and crowd-pleasing musical! If you are wanting to get away and go out to Niagara, it is a must see. The Show runs until October 9th.

Ken and Frances give it a Two Thumbs up!



BUDGET.[®]
BLINDS

Style and service for every budget.

Joe & Cathy Gibson
(905) 213-2583

**CALL FOR A FREE
CONSULTATION**



www.budgetblinds.com

‘SPECIAL CONCERN STATUS’ – OUR SNAPPING TURTLES

Ellen Brewer

In the last week of August and in early September look to the grass. Typically, the eggs of our resident Snapping Turtles are hatching and the little ones are in peril under your feet.

The Snapping Turtle is Canada's largest freshwater turtle reaching a length of 20-36 cm (11.2 inches) and can weigh up to 6 kg (13 lbs). They have a lifespan of up to 100 years and can take 15-20 years before they mature and start laying eggs. Snappers can lay up to 70 eggs and are deposited into two separate holes. These eggs resemble miniature ping-pong balls. Mating season is April to November and laying period is late May to mid-July. Incubation time is temperature dependent, ranging from 9 -18 weeks. Weather and temperature affect the sex of the clutch (warmer temperatures produce male hatchlings - cooler weather produces females). A visible mound and musk odour mark the nesting spot, making them vulnerable to predators like raccoons, skunks and foxes. Thus, less than 1/1000 survive.

Our Snapping Turtles live mostly in water and come out mainly to nest. Typically, females return to the same location yearly using their exceptional night and colour vision to find "their spot". In Canterbury, some of the many spots are around our mail kiosk, in the rocks around the pool and pond, or nearby backyards. So, eyes to the ground folks, for the little ones are dark brown to black and the size of a loonie. If found, give them a hand back to the pond or lake. Their survival may be dependent on your help.



ON THE LAKE WITHOUT A CANOE

Linda Porter

Ever since a watercolour artist visited my classroom and talked about dipping her paint brush into Lake Scugog from her canoe, I have dreamed about living on the lake and painting while paddling. When I retired from teaching one year ago, I ordered a red Sportspal 14 ft canoe from Freedom Canoe and Kayak in Caesarea. The canoe was to arrive in May of 2021, but due to supply issues, Freedom Canoe and Kayak was only receiving small shipments of Sportspal canoes.

Ever the optimist, I prepared for the soon arrival of my canoe by purchasing lifejackets, extra paddles, and a safety kit. A kind neighbour gave me foam blocks to transport the canoe home on the roof of the vehicle and my husband David constructed a frame to store the canoe. Then I went about blabbing to all the neighbours that I was getting a canoe.

As the summer went on, Freedom Canoe and Kayak stopped receiving shipments of Sportspal canoes altogether. Due to the pandemic, the company based in North Bay that made the canoes was delayed in receiving parts: specifically seats and paddles. This delay went into September and beyond. People kept asking, "Did you get your canoe?" and I would regrettably reply, "No," and point to the empty canoe rack under the deck.

On a cold, blustery day in March of 2022, I received a text from Janice and Mike at Freedom Canoe and Kayak that they would be receiving a shipment of 50 Sportspal canoes! Undeterred by the sleet, hail, and snow, we loaded up the canoe and brought it home. Now I am finally living the painting and paddling dream and enjoying canoe trips with family and friends.



THE CANTERBURY KIT

Nora Senechal

As activities open up around the province, Canterbury residents are beginning to prepare for events in our community. The events I hear spoken about most are events where food is served, especially the Scramble Dinners. When we have dining activities in Canterbury, we must bring our “Canterbury Kit.”

All new residents receive a Welcome Package and a description of a Canterbury Kit is one of the pages you received. Items suggested you keep in your kit include:

- plates
- mugs
- ice cubes (these may need to be replaced after each event)
- drink glasses
- bowls
- cutlery
- bottle openers
- beverage (no longer supplied)
- plastic bag for dirty dishes
- container for food waste

The first dinner I attended at The Center was a bit of an eye-opener for me. I brought the very basic kit while all around me the residents who had attended dinners before had everything you could want from plastic wine glasses to a side plate for a roll and small dessert plates. The fact is you can find some really attractive and quality plastic place settings at many kitchen stores this time of year and even at the local Walmart. It’s really interesting to see how each resident personalizes their own kit. If you forget your kit, it’s not far – you just have to make a quick trip to your kitchen to grab it as there will not be extra dishes in The Centre kitchen for you to borrow.

The last thing to remember about your Canterbury Kit is that it is yours. You must bring it with you to events and you are the one to carry it home and wash the dishes. We hope to be eating meals in our Centre again soon. I hope to see you there.

SMILE OF THE DAY!

Dave McBride



I have a pencil that used to be owned by William Shakespeare. But he chewed it a lot.

Now I can't tell if it's 2B or not 2B.

MY DAY

Joy Forbes

The gentle patter of the raindrops upon my roof lulls me to sleep in wondrous proof that the bright morning sun will shine away the fears, tears and stress of yesterday and I am blessed with a brand-new day. It is My Day, all mine to do with whatever I choose. What will I do? Where will I start? The possibilities are endless. It is My Day to cherish, to share, to love and to enjoy. Happiness and contentment fill me with a burst of ecstatic energy. With gratitude and enthusiasm, I attack my daily chores and commitments with a happy song in my heart. This too can be ... Your Day.



Photos: Francis Hurst, Collage: Lou Rocha



TAYLOR FORDER

INSURANCE BROKERS

Your Community Broker



HOME - AUTO - COMMERCIAL - FARM

169 North Street, Port Perry

905-985-8416

www.taylorforder.com



- ✓ Real Estate
- ✓ Wills & Estates
- ✓ Business & Corporate
- ✓ Employment Law
- ✓ Civil & Commercial Litigation
- ✓ Notarizations

905-985-0555

36 Water Street, Port Perry, Ontario L9L 1J2

www.RiverinLawFirm.com

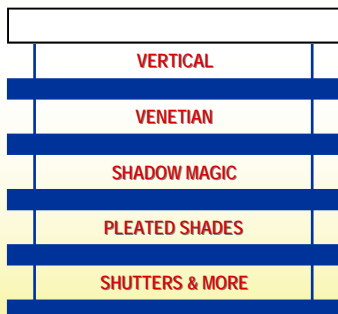
PAMELA'S BLIND CLEANING & CUSTOM WINDOW COVERINGS

SALES * SERVICE * INSTALLATION

- * Ultrasonic Blind Cleaning * Repairs Available
- * Custom-Made Window Coverings

**Dress your windows
with a new look!**

**Call or e-mail for your personal appointment
to our showroom in Pickering**



Call Pamela Today

Phone: 905-839-3693

Email: pamelasblinds@sympatico.ca

Website: www.pamelasblinds.com

SERVING DURHAM REGION SINCE 1996!



We are all about you

montecarlohair.ca

11 Water St. Port Perry
(corner of Water St. & Hwy. 7A)

905.985.3684

HOURS

Monday - Wednesday	9 am - 6 pm
Thursday - Friday	9 am - 8 pm
Saturday	8 am - 3 pm
Closed Sundays	



*Add your personal touch
to all of your special occasions!*

Beer	* Ready in 3 Weeks
White Wine	* Ready in 4 Weeks
Red Wine	* Ready in 6 Weeks

Make your own beer, wine and save \$\$\$

Temperature Controlled Fermenting Room
for Top Quality Wines & Beers

Over 100 Custom Beer Recipes

Hours:

Tues. 10 a.m. - 6 p.m.

Wed. - Fri. 10 a.m. - 8 p.m.

Sat. 10 a.m. - 2 p.m.

Paul Thaeter

Phone 905-985-4352 Toll Free 888-304-5175

159 Casimir St., Port Perry, ON L9L 1C4



MAJORTECH COMPUTERS

- Virus/Spyware Removal
- Laptop/PC/MAC Repair
- Network/Wireless Setup
- Data Recovery
- Repairs in Your Home or My Office

Phone 905-985-0568 Cell 905-809-4693

Email gmcullen@majortech.ca

EPISODES OF...



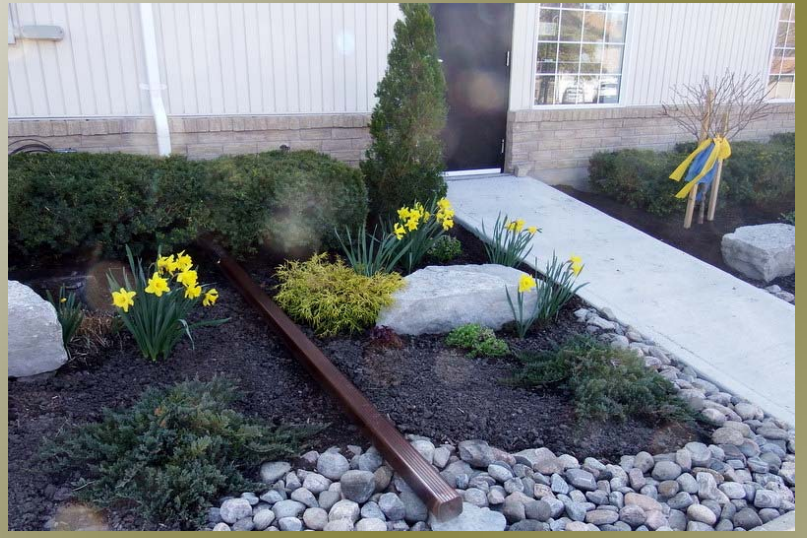
JULY 1ST 2015 OUT CELEBRATING



SINGING OF OH CANADA



CANADA DAY 2018



Scugog's Premier Supplier of Windows and Doors



A. Oppers Ltd
Windows & Doors

Showroom:
193 North St. Port Perry
905-985-4910
www.oppers.ca
info@oppers.ca

The FRAMER'S GALLERY

Established 1976

233 Queen St. Port Perry
(905)985-2543 1-800-637-5391



Professional Picture Framers Association

Certified Picture Framers

Tracey Strong C.P.F.
Warren Strong C.P.F.
Maggie Rowland C.P.F.

Experts in:
The preservation and display of
artwork, collectibles and heirlooms.

Edward Jones

> edwardjones.ca



Michael Stewart
Financial Advisor
183 Casimir St.
Unit #1
Port Perry, ON L9L 1B7
4162728777
michael.a.stewart@edwardjones.com

MKT-13542-C EXP JUN 2023 © 2021 EDWARD D. JONES & CO., L.P. ALL RIGHTS RESERVED.

EDUARDO'S FINE FOODS

A little shop that sells
select gourmet ingredients
and imported fine foods



268 Queen St Unit 2, Port Perry, ON
eduardosfinefoods.ca 365-881-5596



Have you heard about the "Mary Kay" beauty company created by Mary Kay Ash?

I am proud to be part of a company that empowers women in business, leads research in the beauty industry and the development of anti aging skincare.

www.MaryKay.ca/suepalmermyklife

Summer Special DEALS

- Daily Benefit Antioxidants / multivitamins
- Skincare 20% discount
- Sun protection and water lily scented body lotion to get ready for our best summer skin!

To discuss your skincare needs and received your free trial skincare set....
Contact Susan Palmer @ 905-626-5786



WINE ON WATER *Winemaking at its best*



VINE
CO

ESTATE SERIES

NIAGARA MIST

SIGNATURE SERIES

BIG CHANGES!

New categories of wines and some new varietals to try!
Please come in and discover your new favourite today!

Please save me your
used corks for
art projects

STORE HOURS

TUES - FRI - 10-2, SATURDAY 9:30 - NOON.
OPEN LATER BY APPOINTMENT. (CLOSED SUNDAY AND MONDAY)

38 WATER ST.

TELEPHONE - 905-985-1197

EMAIL - julie@wineonwater.ca



Annual General Meeting – June 15, 2022



TIPS TO MAKE YOUR GARDEN MORE POLLINATOR FRIENDLY

From landscapeontario.com

Pollinators, including bees, butterflies, beetles, birds and bats, play an essential role in maintaining healthy ecosystems. They provide the service of pollinating our crops and plants, which in turn increases crop yield and biodiversity in the natural environment!

Did You Know?

Pollinators are responsible for pollinating over 30% of the foods we eat!

Plan ahead:

Pollinators, such as bees and butterflies, require a constant source of food from when they emerge in the Spring, right through to the Fall. Be sure to have a continuing sequence of flowers in bloom to provide pollen throughout the growing season.

Plant native:

Native plants have co-evolved with pollinator species, and are well adapted to the climate, soil, and growing season. It is okay to plant non-native plants as long as they are not invasive, and are planted according to the label.

Plant single bloom varieties:

Pollinators can navigate single bloom flowers much more easily because their nectaries are exposed, allowing easy collection of nectar and pollen. Petals of double bloom varieties often block the flowers' nectaries, making it difficult to navigate.

Plant host plants:

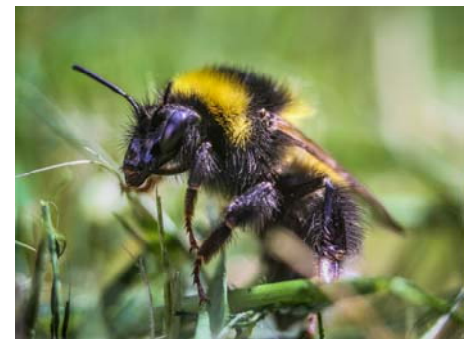
Butterflies require specific host plants to lay their eggs, so that their offspring (caterpillars) can feed on them once they emerge. For example, monarch butterflies require milkweed to feed on in the early stages, so that's where adult monarchs lay their eggs. Once the caterpillars become butterflies, they feed on all nectar and pollen sources.

Mass planting:

Try to group plant species together instead of single plants throughout your garden. For example, plant a large patch of echinacea. Mass planting helps pollinators spot resources more easily, pollinate more efficiently, and spend less energy collecting pollen and nectar. Bees tend to collect pollen from one type of plant at a time.

Water and fertilize sufficiently:

Proper watering helps maintain healthy plants, which increases nectar and pollen sources for pollinators. Try to use natural fertilizers, such as compost, to help add nutrients to the soil. If necessary, use a slow-release fertilizer. Pollinators are very sensitive to chemicals, so try to remove weeds by hand.



Deadhead and prune:

Regular trimming and deadheading plants will encourage new growth for more blooms, and a longer flowering season. The more pollen and nectar available, the better!



Minimize manicuring:

Perfectly manicured lawns and gardens do not have as much of a benefit to pollinators. The bees will thank you for leaving those pesky dandelions on your lawn, as they provide essential nutrients in the early spring. Fallen trees can provide crucial habitat for the many species of cavity nesting bees when left in your garden. Excessive raking or tilling should be avoided to prevent destroying ground-nesting pollinators' nests.

Leave patches of bare soil:

There are many native bee species that build their nests in the ground, by tunnelling into the soil. You can provide habitat for them by leaving areas of bare soil throughout your garden, hidden behind your plants.

Provide a nesting box:

Nesting boxes can be purchased at many garden centres. There are also many different ways you can build nest boxes for native, cavity-nesting bees. They love to build nests in hollow reeds or existing tunnels in untreated wood.



Provide a water source:



Pollinators also require a source of fresh water. You can provide a safe water source in your garden by filling a shallow dish with water and marbles. Bees and other pollinators can land on the marbles and collect water without the risk of drowning. It is important to change the water often and keep it full, as bees and other insects will return to the source. By incorporating these ideas into your garden, you can provide crucial habitat and nutrition for many pollinator species that are currently at risk.

YOU can make a difference!

Many pollinator species populations are at risk due to a combination of many different factors, including: climate change, habitat loss, and pesticide exposure. The decline of pollinator species could ultimately lead to a parallel decline of plant species, threatening biodiversity and food security. Habitat destruction and fragmentation is having a significant effect on pollinating species.

Pollinators locate food sources by sight and scent.

It is important to keep in mind that not all pollinators see colour the same as we do, like honey bees for example. We base our vision off of three colours of light: blue, green and red. Whereas honey bees base their vision off of blue, green and ultraviolet light. This combination makes it very difficult for a honey bee to decipher a red flower from a green background. You can help out the honey bees by choosing flowers that have white, yellow, blue or purple flowers. This will help them spot resources in your garden more easily! Pollinators will also go crazy for aromatic flowers, such as lavender.



PORT PERRY *auto glass & trim Ltd.*

10% off coupon

1575 HWY #7A
Port Perry, Ont. L9L 1B5
(905)985-8507

www.portperryautoglass.ca

YES! WE ALSO DO...

AUTOMOTIVE

windshield replacements
stone chip repairs
window tinting
safety glass
auto upholstery-seat damage or burns
new headliners
convertible & vinyl tops
water leaks
repair power locks & windows
custom interiors
vintage car interiors & glass
tonneau covers
sunroofs
sliders
trunk luggage racks
hood protectors
body moulding

MISCELLANEOUS

awnings
tractor seats
office chairs
snowmobile seats
sea-doo covers
restaurant seats
hospital furniture
tent repairs
motorcycle seats
store front windows & doors
a/c covers
bbq covers
foam sheet available
R/V windshields & upholstery

HOUSEHOLD

glass table tops
mirrors door replacements
window replacements
thermal glass

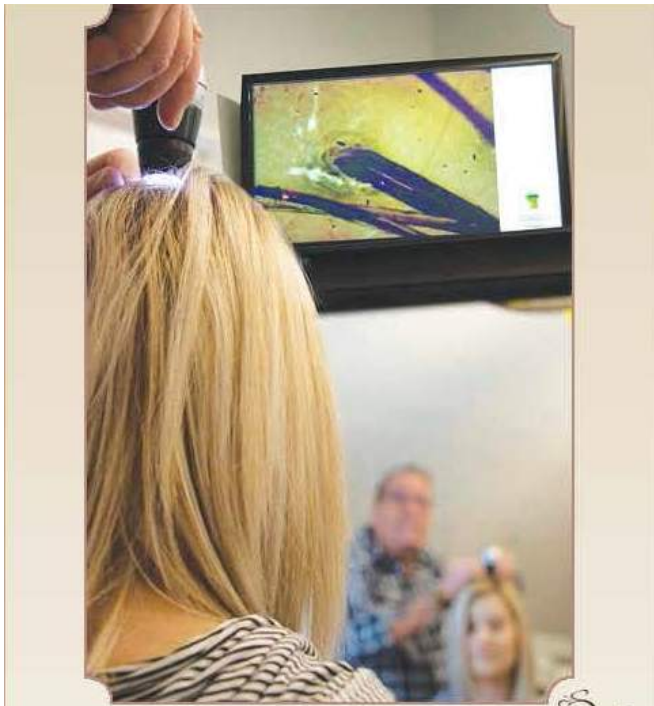
BOATS

convertible tops
camperback tops
cockpit covers
custom frames (aluminum & stainless)
complete boat interiors
interior & exterior alterations
marine carpeting
replacement windows & screens
boat windshields
pontoon boat covers

LETTERING

window lettering
vehicle lettering
boat & sled registration #'s
boat names
R/V lettering
pin striping
vehicle graphics
custom made banner for all occasions
lexan & Plexiglass cut to size
for sale signs
for rent signs

**If You Don't See It, Just Ask...
We Probably Can Do It!**



Beautiful
HAIR starts at
the roots

A SOLUTION TO EVERY PROBLEM

If you are suffering from one of the following ailments, or if you have noticed the thinning of your hair or have experienced hair loss, It is important to take immediate action.

- Alopecia
- Itching
- Dry and Oily Dandruff
- Hair Loss in Women and Men
- Hair Loss After Pregnancy
- Chemotherapy and Cranial Radiotherapy

Rosario Greco Styles Hair Salon is proud to offer our clients the most accurate and user-friendly hair scalp and hair cuticle analysis available on the market today.

The new Progen Probe AMP 300 uses state-of-the-art technology for an in-depth scalp analysis ensuring a more encompassing, efficient and individual treatment plan for every client.

For your private consultation, please call

905-985-0099

Specializing in:
Hair Colour • Precision Hair Cutting
Barbering • Wigs • Hair Loss Prevention

RG
ROSARIO GRECO
STYLES
HAIR SALON
LADIES & MEN
905 985 0099

k ELEVEN AUSTRALIA **PROUD**

**Wanted - Experienced Hair Stylist
to join our dynamic team!**

21 Wilbur Avenue | **905-985-0099** | rgreco@quisk.ca

Rosario Greco Styles @RGSTYLES

RG ROSARIO GRECO
STYLES



Your life.
Your move.

Downsizing + Moving Specialists for Seniors in the Durham Region

We specialize in helping to
downsize, de-clutter,
organize, sell, donate,
dispose, pack, move,
unpack and settle
into your new home.

We also help families and
executors to clear estates.

NOW OFFERING
Photo organizing and
digital scanning!



Call 647-948-3482 for a **FREE** consultation
www.downsizingdivadurham.com

"Best Pharmacy" for 5 years running.

We want to thank all our patients for their support.

Are you getting
the best?
Join us today.

Transferring to our
pharmacy is easy, quick
and painless.
Call us today.



Pharmacy Associates
of Port Perry

11 Water St, Port Perry
905.985.9200

www.pharmacyassociates.ca



Your time is valuable.

We believe waiting 45+ minutes for a prescription is unacceptable. And being on hold for 10 minutes before someone answers the phone is wrong. Why are you putting up with it at some other big-box pharmacies?

Stop accepting unacceptable service. Join us today. Call us at 905.985.9200



Pharmacy Associates
of Port Perry

905.985.9200

11 Water St. Port Perry, ON L9L 1H9 **905.985-9200**

Top Quality Product Competitively Priced Professionally Installed

CANADIAN TINT

RESIDENTIAL & COMMERCIAL

Up To 79% Heat Reduction

Which will help control hot spots within your home, in turn reducing your air conditioner costs while increasing comfort level.

Up To 85% Glare Reduction

Which helps eliminate shine on televisions and monitors.

99.9% UV Block

Which helps reduce fading of floors, furniture, artwork, etc.

Frosted Film

Which allows 70% of light in yet has complete privacy great for bathrooms, garage windows and front doors

905 985 0735

JOHN ROWETT CELL 416 779 8468

www.CanadianTint.ca

cdntint@gmail.com

Water Street, Port Perry, Ont.



Open Monday - Friday

8:00 a.m. - 5:30 p.m.

(905) 985-0900

garyscustomexhaust@hotmail.com

131 North Port Rd.
Port Perry, ON L9L 0B7



THE #1 MOST TRUSTED BRAND OF WINDOWS AND PATIO DOORS



ANDERSEN™
WINDOWS & DOORS

LOVE THE LIFE YOU SEE™



Serving Your Community for 33 Years!

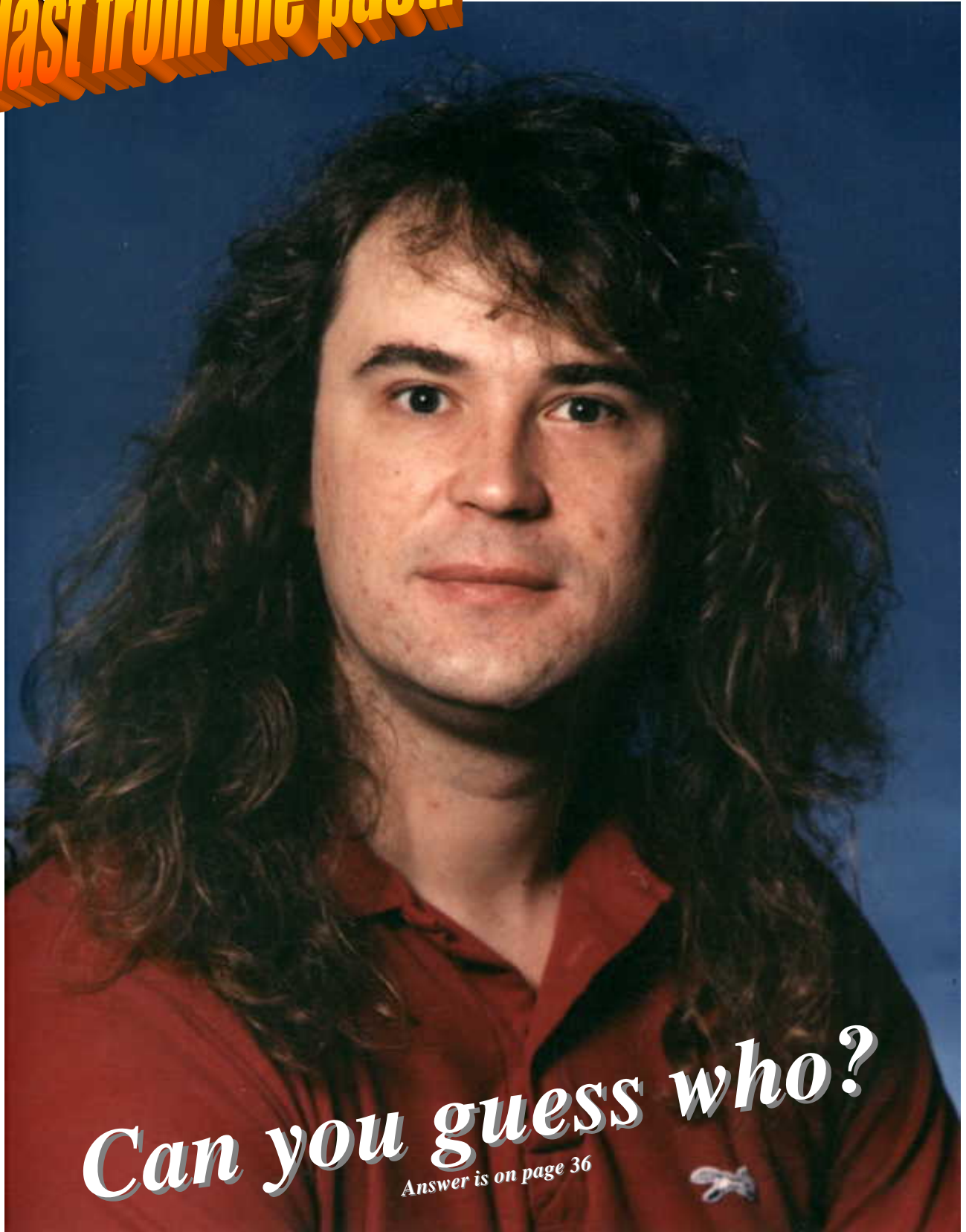


- *High Quality Windows & Doors*
- *Expert Installation You Can Trust*

905-985-0075

Not our usual picture....

Blast from the past!

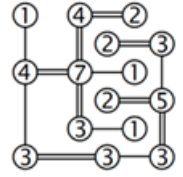


Can you guess who?
Answer is on page 36

BRIDGES

The circles represent islands. The goal is to draw a set of lines representing bridges between the islands, so you can get to any island from any other island, with the following rules:

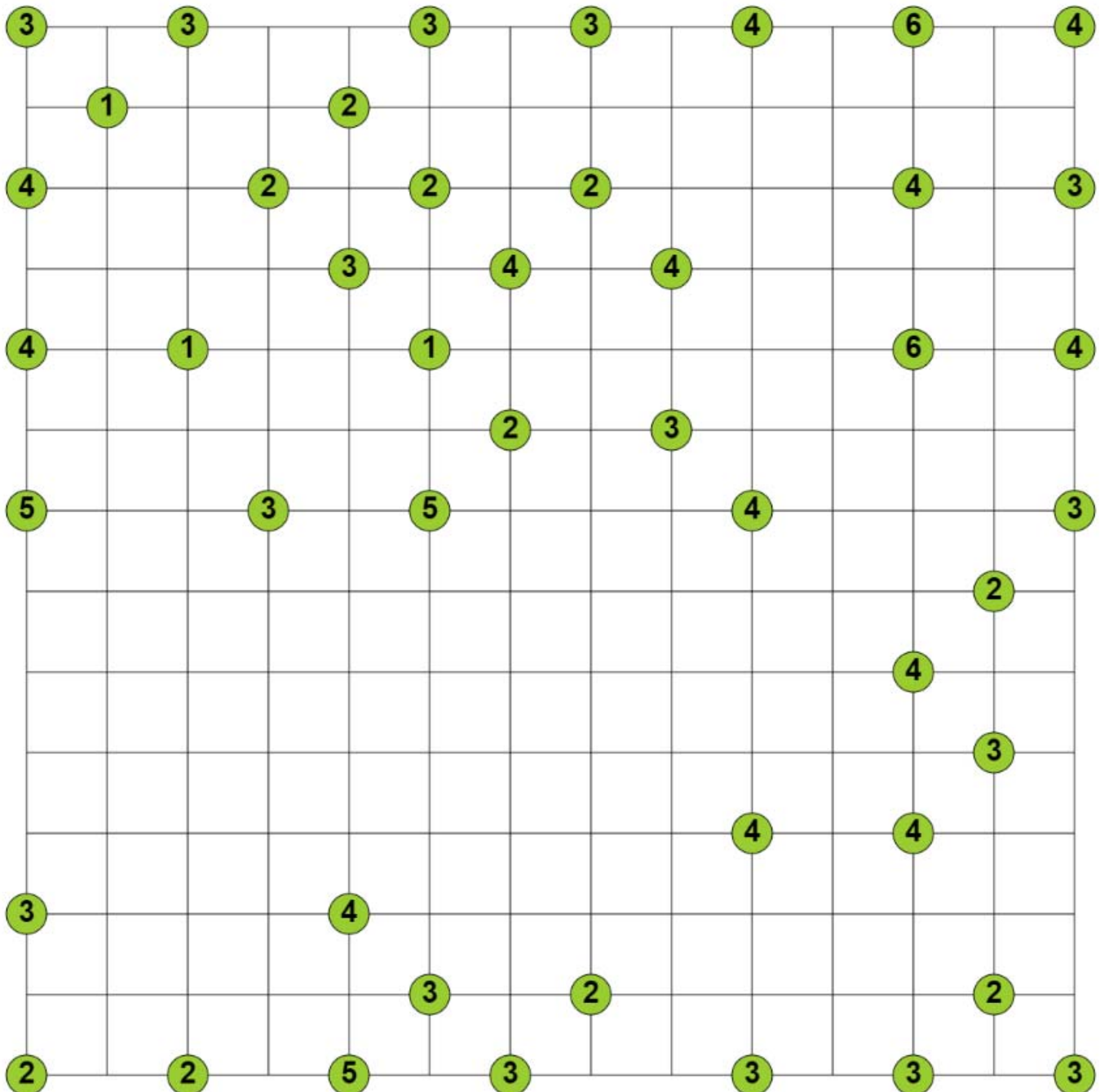
1. Each island has a number which is the total number of bridges reaching the island.
2. Bridges can only go in a straight line horizontally or vertically
3. No bridge crosses another bridge
4. There are at most 2 bridges between any pair of islands
5. Each bridge starts and ends at an island without crossing any islands in between



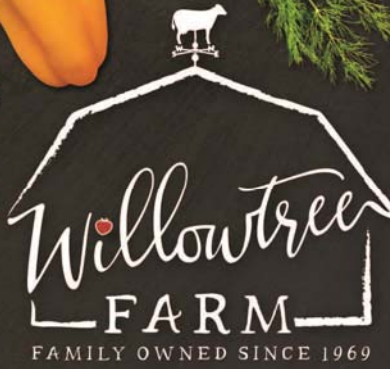
*A sample puzzle with
bridges filled in*

Remember, you must be able to get from any island to any other island via the bridges.

There is only one correct solution to the puzzle. Hint: look at how many islands can be reached from a particular island, and how many bridges it needs; for example, if an island can reach 3 other islands and it needs 6 bridges, there must be 2 bridges to each of the other 3 islands (from rule 4 above).



OPEN YEAR
ROUND



Port Perry's Best Kept Secret!

Farm Fresh Produce • Scratch Bakery
Cafe • Ready-Made Meals • Seasonal Events
Animal Experience • Traditional Butcher Shoppe

905.985.4973 willowtreefarm.ca
975 Regional Rd 21, Port Perry, ON

OPEN
7 days a week

GROCERY
SHOPPING
MADE EASY.

NOW
HERE



SHOP ONLINE



OUR EXPERTS DO THE
SHOPPING FOR YOU



PICK UP AND GO WITH
PC EXPRESS LOCATIONS

GET STARTED TODAY AT

 **Independent**
YourIndependentGrocer.ca

1893 Scugog St., Port Perry

TYSYD LAWN CARE

Proudly Serving the Residents of Canterbury Common for 17 Years

FOR ALL YOUR PROPERTY MAINTENANCE NEEDS

Excellent Service at Great Prices

Give JAMEY a Call (905) 243-5591

Your Local Year Round, Fully Insured WSIB Covered Property Maintenance Specialist

In Canterbury Common, I am your Neighbourhood REALTOR®

Jane Smythe
Sales Representative



For 23 years, I've been a member of CCRA, and recently served all of our Members and Residents on the Board of Directors. I continue to be a strong advocate for why so many people choose to live in our unique, vibrant community.

During this unprecedented time, it's vital to have the right company behind you to guide you. At Royal LePage Frank Real Estate, we are educated on the intricacies of protecting you and your property, we know how to most effectively navigate the real estate transaction during this pandemic. Royal LePage is leading the industry on implementing safety standards to keep you safe and to mitigate any health risks related to a purchase or sale. As your REALTOR®, my focus is to fully manage all the details that surround the sale of a home. Part of that includes the team of experts I've assembled to assist my clients, carefully chosen to work with seniors and their families and each working within the guidelines to protect the health of everyone involved.

Call me today, if you, or your extended family would like a confidential meeting about the market, recent sales in our area and the services I provide. I'm here to safely serve you.

Jane Smythe
Sales Representative
Direct 416.938.4812
Office 905.985.9898
jsmythe@royalpage.ca
JaneSmythe.com



CANADA'S
REAL ESTATE COMPANY

ROYAL LEPAGE
100 YEARS SINCE 1917
FRANK Real Estate
INDEPENDENTLY OWNED AND OPERATED, BROKERAGE

Not intended to solicit homes currently listed for sale or buyers working with a representative.

Multi-Day Tours

- Newfoundland
- Maritimes
- Hawaii

Day Trips

- Kingston
- Prince Edward County Wine Country Tour



www.canxplore.com

cathy@canxplore.com



Dessert Shop

Specializing in desserts for birthdays, anniversaries and other special occasions.

Pick-up or delivery 7 days a week 12pm - 6pm

Pre-order <https://cupcakejunkie.ca>

Contact us: text or call (866) 210 3363

jillian's



Jillian's is now open 5 days a week
Tuesday - Saturday 10 am until 4 pm

66 Brock Street West, Uxbridge
(905) 985-5500
www.jillianathome.com

...Port Perry's only locally owned and operated Funeral Home since 1846...



*Myles O'Riordan, Funeral Director/
Owner and wife Susan*



*Mark K. Fletcher, Funeral Director/
Prearrangement Counsellor*

**216 Queen Street, Port Perry, ON L9L 1B9
905-985-2171**

The Pet Assistants

The Perfect Pet Assistant is a Vet Assistant

Your Neighbour in Canterbury !



Bonded & Insured

Providing Knowledgeable care for over 10 years

- 🐾 Personalized dog walking
- 🐾 In-Home Overnight Stays
- 🐾 Specialty Services
- 🐾 Cat Sitting / Visits
- 🐾 Pet CPR & First Aid Certified
- 🐾 Medication Administration
- 🐾 Puppy & Potty Visits
- 🐾 Pet Taxi

905-213-7895 905-985-2283

**Cindy Dale, Certified Vet Assistant
cindy99@live.ca**



Happy Hour

Photos: Helen Vorstadt & Francis Hurst

Jackson

Water Conditioning Limited

1-800-721-4921 or 705-439-2589

jacksonwater@xplornet.com

Residential * Commercial * Agricultural * Industrial * Cottage
Sales * Service * Rentals

Ultraviolet Sterilizers * Drinking Water Systems, Softeners Iron & Sulphur Filters * Chlorination & Peroxide Systems
Salt Delivery * Reverse Osmosis, Replacement Filters & Ultraviolet Lamps



www.jacksonwater.ca



Come Home Clean Cleaning Services



Weekly / Bi-Weekly / Monthly

Move in / Move out clean

Custom Cleaning Pkgs. Available

Call for a quote

Jennifer Moses
289-688-0412

comehomeclean17@gmail.com

Shop
for these
trusted brands
here

AROMAFORCE[®]
100% Pure
Unrefined Essential Oils

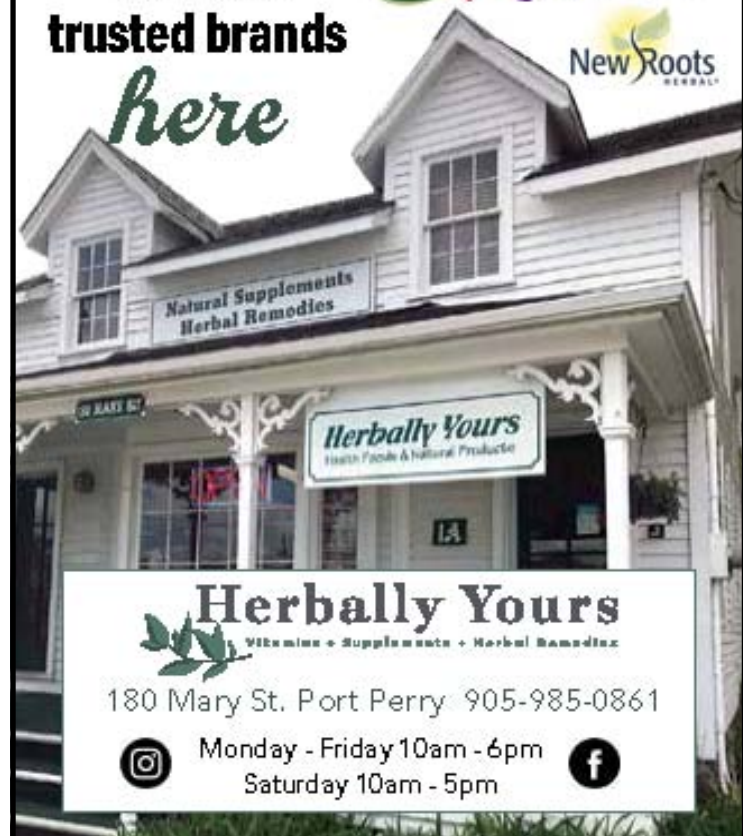
natural
Factors

St Francis
HERB FARM



AOR

New Roots
HERBALS



Herbally Yours

Vitamins • Supplements • Herbal Remedies

180 Mary St. Port Perry 905-985-0861



Monday - Friday 10am - 6pm
Saturday 10am - 5pm



Parker-Painting



- **Residential**
- **Commercial**
- **Interior**
- **Exterior**

Call for your free quote

(905) 429-0655

Email: jonasparker09@gmail.com

Dear Canterbury Common Neighbours

We are two university students helping you maximize the curb appeal of your homes



- Decks
- Patios
- Front Entryways
- Stone interlocks

Contact us at

289-354-0574

powerwashing.eco@gmail.com



**DURHAM
TECH
SOLUTIONS**

PC / Laptop / Apple Repairs

Free Diagnostics

Free Local Pickup & Dropoff

On-Site Service Available

Customized Tech Classes Available



Tel: (905)-244-9394

Email: Marshall@DurhamTechSolutions.ca

Got Gas??

***Gas Fireplace
Installations
Service / Cleanings
Gas Lines
BBQ's***



LES ALLEN
Owner

(289) 688-4798



Paddy's Market

The Appliance Specialist
Family owned & operated since 1955



Broil King®

IT'S HERE

THE ALL NEW CROWN™



Paddy's Market

2212 TAUNTON ROAD, HAMPTON
APPLIANCE WAREHOUSE:

905-263-8369 • 1-800-798-5502

www.PaddysMarket.ca



In Memoriam



Harry Thornton
March 16,, 2022



Jim Bambrick
April 1, 2022



June Kydd
April 14, 2022



Werner Koepke
May 11, 2022



Canterbury Common Residents' Association



Board of Directors 2022 - 2023

President	Lou Rocha	Finance	Jim Cushnie
Vice-President	George Clapham	Governance	Tom Phipps
Secretary	Carole Johnson	House & Property	George Clapham
Treasurer	Jim Cushnie	Municipal Affairs	Dorothy Bull
Administration	Murray Smith	Social	Lauren Maher
Communications	John Nesbitt		

Committee Chairs 2022 - 2023

Administration	Murray Smith	House & Property	George Clapham
Communications	Nora Senechal	Municipal Affairs	Dorothy Bull
Finance	Lee Maher	Social	Lauren Maher
Governance	Gord Simmons		

The Chronicle Team for the Summer Issue

Chair / Board Liaison	Nora Senechal	Layout / Preparation	Wendy Lang
Vice Chair	Karen English	Secretary	Joan Cushnie
Editor	Linda Porter	Webmaster	David Streeter
Submissions Coordinator	Frances Hurst	Photo Coordinator	Lou Rocha
Advertising	Wendy Lang	Committee Support	Alice Lynch
	Nora Senechal		David McBride
			Dave Brolley
			Dot Clark



THE PORT
CHEESE CO.

FINE CHEESE AND CAFÉ

203 Queen St.
Port Perry
portcheese.com

(905) 985-2515



Join our group departure aboard Celebrity's

MILLENNIUM

Sailing a 7 Night Mexican Riviera Cruise

26 November - 03 December, 2022

Rates in Canadian Funds per person

(for CRUISE ONLY based on double occupancy including drinks, tips & surf wifi)

Balcony Stateroom (Category 2B)
CAD \$2200⁰⁰ each (cruise only)

This beautiful ship has many different suite and stateroom options.
 Rates for triple and quad cabins available upon request.

Cruise: A refundable deposit of \$530 per cabin is due at time of booking for most double category types. Final payment is due 15 Aug 2022. There are only a limited number of cabins available at above rate. Air: At time of printing it is too early to secure airfare. Let me know what dates you are interested in and I can advise of costs as they become available. (This is an excellent opportunity to use up some points if you can)



Puerto Vallarta



Puerto Vallarta

Sailing Itinerary

Day	Port / City	Arrive	Depart
26 Nov	Los Angeles, California		4:00 pm
27 Nov	At Sea		
28 Nov	At Sea		
29 Nov	Puerto Vallarta, Mexico	9:00 am	4:00 pm
30 Nov	Cabo San Lucas, Mexico	8:00 am	6:00 pm
01 Dec	At Sea		
02 Dec	Ensenada, Mexico	9:00 am	5:00 pm
03 Dec	Los Angeles, California	6:00 am	



Cabo San Lucas



Ensenada

Optional insurance can be added at final if desired. Passports must be valid six months beyond return date. Rates can change anytime prior to deposits being paid.

For more details and your copy of the brochure, call Virginia Frew at

905-985-2268

virginia.frew@marlintravel.ca

158 Casimir Street, Suite 101, Port Perry



www.celebritycruises.com